



# FS1522 - 1500lb Flake Ice Machine

Prodigy Plus® Flake Ice Machine



## Features and Benefits

- Sealed, maintenance-free bearings for reduced preventative maintenance and long-lasting performance
- Stainless steel evaporator and auger for maximum durability
- AutoAlert™ indicator lights for better visibility
- Operational footprint among the industry's smallest
- Unit specific QR code for quick access to service manuals, cleaning guides and warranty history
- Front-breathing - No side clearance required for flexible placement
- Smart-Board™ advanced feature module available for additional diagnostic capabilities
- Optional Vari-Smart™ ice level control allows operators to customize ice levels
- Antimicrobial protection guards internal surfaces between cleanings
- A full range of water- and energy-saving features



Sealed, Maintenance-Free Bearings  
Ensure Maximum Reliability and  
Contribute to a Long Machine Life



## 24 Hour Volume Production

### Air Cooled

70°F/21°C 50°F/10°C	Air Water	90°F/32°C 70°F/21°C
1514/688 lb/kg		1095/498 lb/kg



## Modular Bin Options

Model Number*	Dimensions W" x D" x H"	Capacity lb/kg	Finish	Ship Weight lb/kg
B842S	42 x 34 x 44	778/353	Metallic	190/86
B948S	48 x 34 x 44	893/406	Metallic	209/95
BL1048S	48 x 31 x 54.4	1000/454	Stainless Steel	268/122
BL1360S	60 x 61 x 54.4	1320/599	Stainless Steel	322/147
BL1660S	60 x 31 x 63.4	1660/753	Stainless Steel	340/154

\*Contact Scotsman for bin top requirements. \*\*Add 6" Height for bin legs.  
† Stainless steel with galvanized back & bottom.



AutoAlert™ Indicator Lights and  
QR Code for Easy Maintenance



## Flake Ice



Cools more quickly than  
other ice forms. Ideal for  
seafood and produce  
displays.



## Certification



## Warranty

- 3 years parts and labor on all components.
- 5 years parts on the compressor.
- Warranty valid in North, South & Central America for commercial installations.
- Contact factory for warranty in other regions.
- Residential Applications: 1 year parts and labor

# Scotsman®

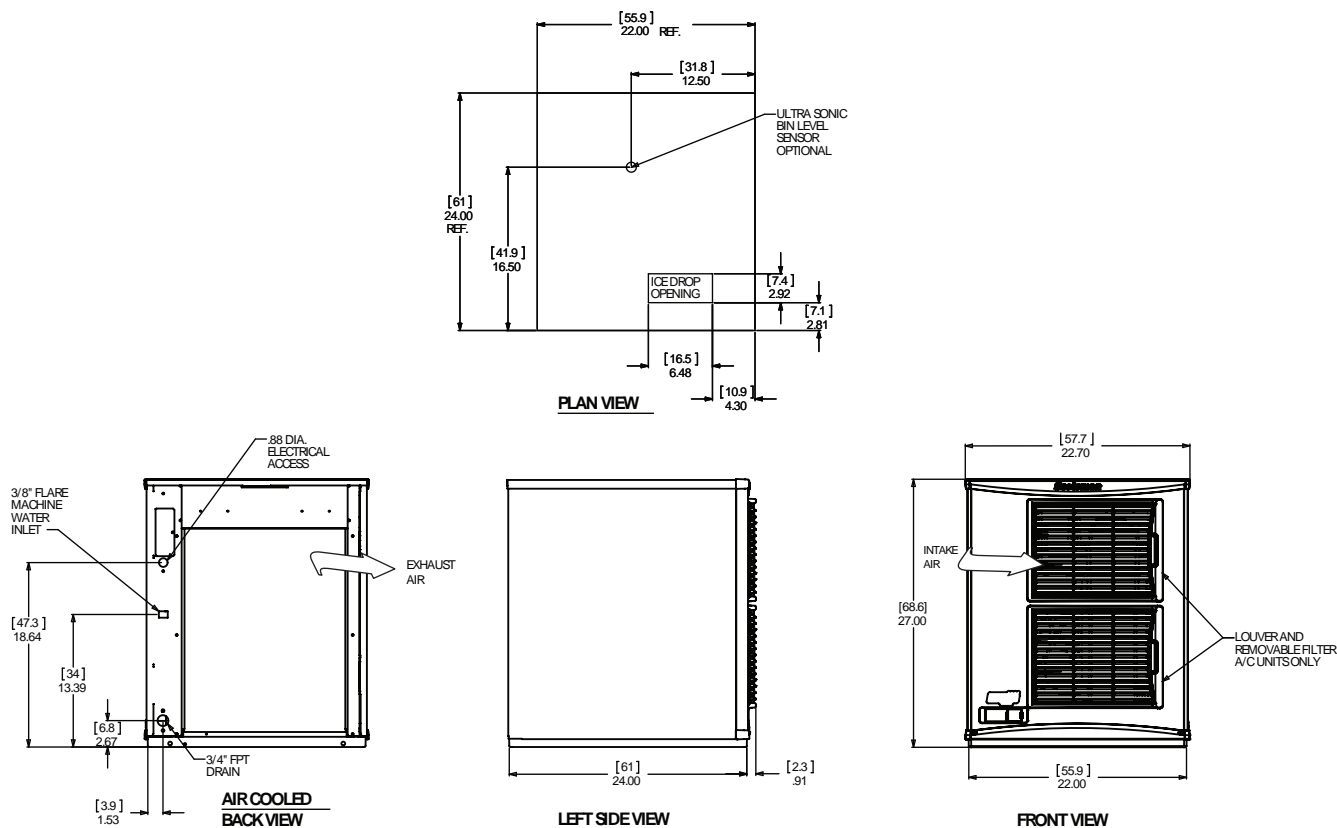
101 Corporate Woods Parkway, Vernon Hills, IL 60061

1-800-SCOTSMAN | Fax: 847-913-9844 | [www.scotsman-ice.com](http://www.scotsman-ice.com) | [customer.relations@scotsman-ice.com](mailto:customer.relations@scotsman-ice.com)

FS1522 - 1500lb Flake Ice Machine

# FS1522 - 1500lb Flake Ice Machine

Prodigy Plus® Flake Ice Machine



## Specifications

Model Number	Condenser Unit	Basic Electrical Volts/Hz/Phase	Max. Fuse Size (amps)	Circuit Wires	Min. Circuit Ampacity	Energy Consumption kWh/100 lb (45.4 kg) 90°F(32°C)/70°F(21°C)	Water Usage Gallons/100 lb (liters/45.4 kg)		Energy Star®
							Potable 90°F(32°C)/70°F(21°C)	Condenser 90°F(32°C)/70°F(21°C)	
FS1522AX-32	Air	208-230/60/1	20	2	14.8	3.28	12.0/45.5	-	★



## All Models

### Dimensions (W x D x H):

Unit:	Individual 22" x 24" x 27" (55.9 x 61.0 x 68.6 cm)
	Side by Side 45.8" x 24" x 27" (116.3 x 61.0 x 68.6 cm)
Shipping Carton:	25.5" x 27.5" x 32.5" (64.8 x 69.9 x 82.6 cm)

Shipping Weight:	224 lb / 102 kg	BTUs per hour:	16,000
------------------	-----------------	----------------	--------

Model Number	Refrigerant	Refrigerant Charge (oz)
FS1522AX-32	R290	12.0



## Accessories

Model Number	Description
KVS	Vari-Smart™ Ice Level Control - Program ice bin levels to match ice needs.
KSBU	Smart-Board™ Advanced Control - Use additional operational data for fast diagnosis.
KSBU-N	Smart-Board™ Advanced Control with Network - Network capable.
KPAS	Prodigy Advanced Sustainability Kit - Includes KVS and KSBU - N

Scotsman recommends all ice machines have water filtration. See Scotsman water filter specification sheet for details.



## Operating Requirements

	Minimum	Maximum
Air Temperatures	50°F (10°C)	100°F (38°C)
Water Temperatures	40°F (4.4°C)	100°F (38°C)
Remote Cond. Temps	-20°F (-29°C)	120°F (49°C)
Water Pressures	20 PSIG (1.4 bar)	80 PSIG (5.5 bar)
Electrical Voltage	-5%	+10%

Specifications and design are subject to change without notice.